

Welcome Wagons WW 05

Bogie Bolster E



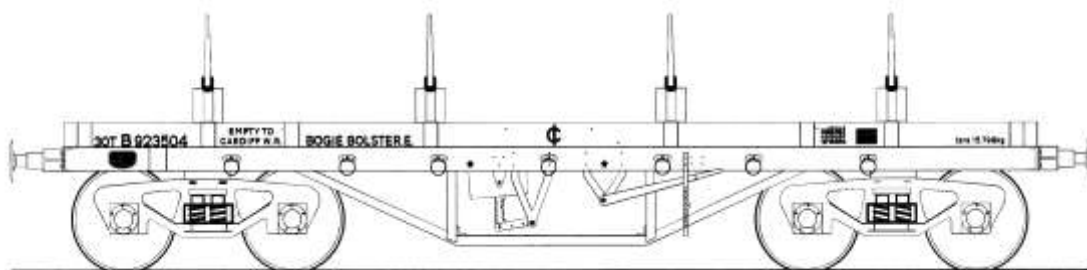
History

The 'Bogie Bolster E' was the last of a new design built for British Railways and built before the introduction of air-braked types. It was the smallest of the standard Bogie Bolsters and 1,200 were built to diagram No. 1/479 with a carrying capacity of 30 tons.

Running Numbers

B923300 – 924399	Lot 3343	Ashford	1961-62
B924800 – 924899	Lot 3440	Ashford	1962

All above were vacuum fitted and for more information see MRC March 1983



Transfer layout, drawing not to scale.

Parts List

Etch
Coupling springs x 2
6BA bolts x 2
6BA nuts x 2

Instructions
Coupling links x 4
.7mm wire x 8"
Spilt pins x 2

W/M castings

DW-25, Oleo buffer x 4
DW-33, Vac pipe x 2
DW-80, Bogie side frame x 4
DW-82, Brake X shaft long x 2
DW-83, Brake X shaft short x 2
DW-86, Brake X shaft link x 2

DW-16, Detail set x 2
DW-29, Vac cylinder x 2
DW-79, Bogie cross member x 2
DW-81, Bolster Top x 4
DW-85, Side pockets x 16
DW-84, Side shackles x 14

ITEMS REQUIRED TO COMPLETE, 2 x sets of 3'1" 3hole wheels sets inc. bearings, Slaters 7122 or the New Welcome turned steel insulated Wheels, Paint and transfers. These items except the paint can be found on the website www.modelrailwaywagons.co.uk or from our e bay shop http://stores.shop.ebay.co.uk/On-The-Wagon-Depot_W0QQ_armrsZ1

Reference Books

British Railways Wagons the First half million
By Don Rowan
ISBN 07529 03780

British railways Goods wagons in Colour
By Robert Hendry
ISBN 1 85780 03780

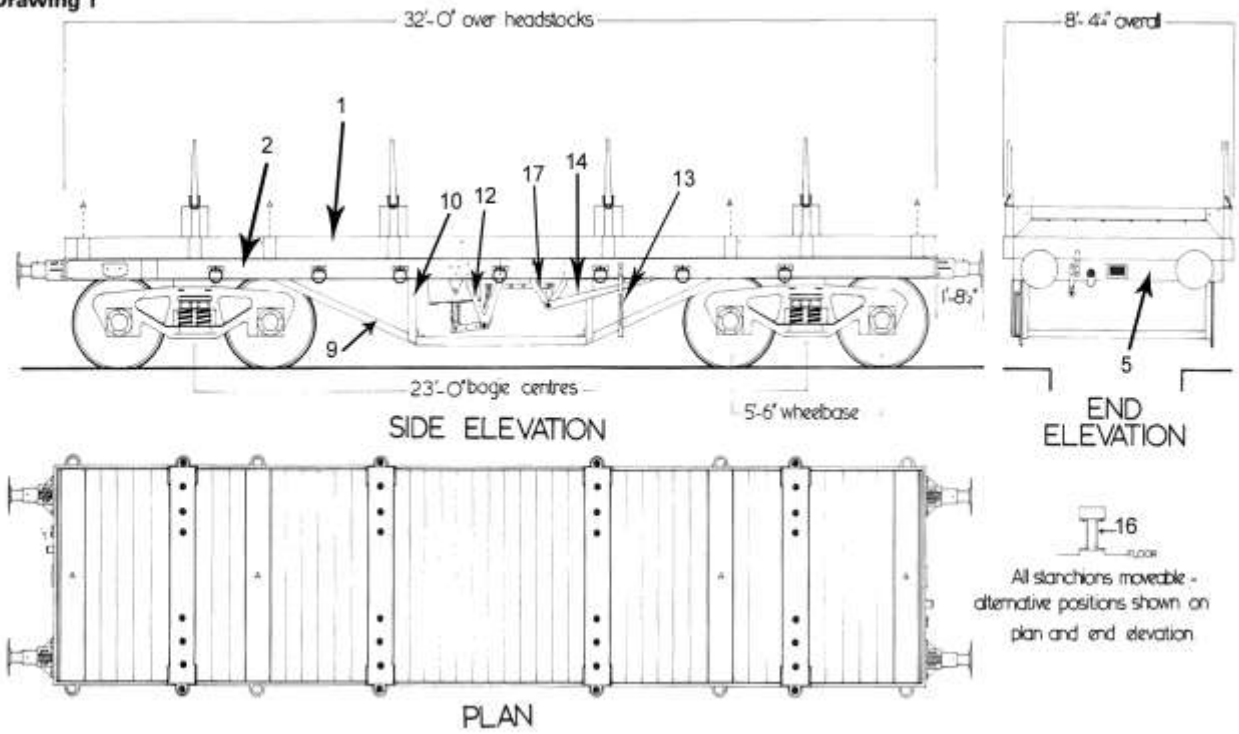
British Railway wagons, opens and hoppers
By G. Gamble
ISBN 1 1900298 06 6

British Railway Wagons No.1, Open & Hoppers
ISBN 1900298 015

Web Reference

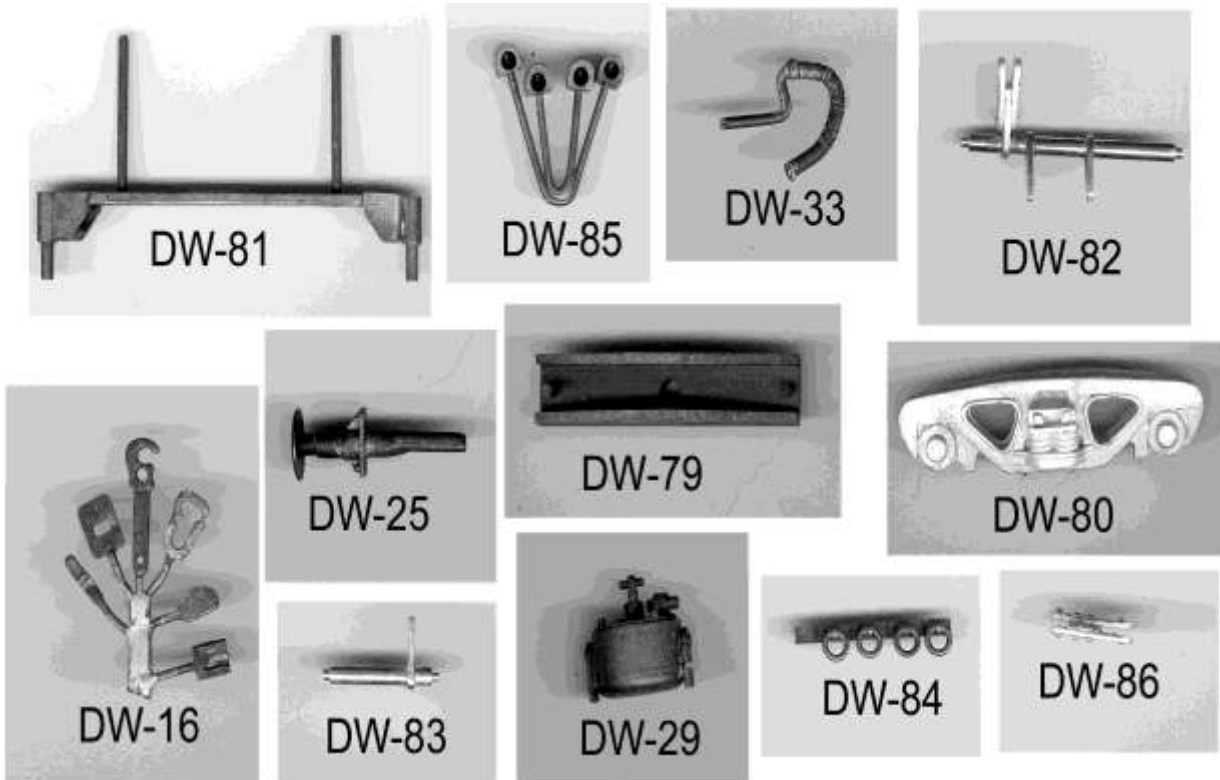
Paul Bartlett Wagon Images (<http://paulbartlett.zenfolio.com/brcoilpjp/h347ec825#h18b31fe8>)

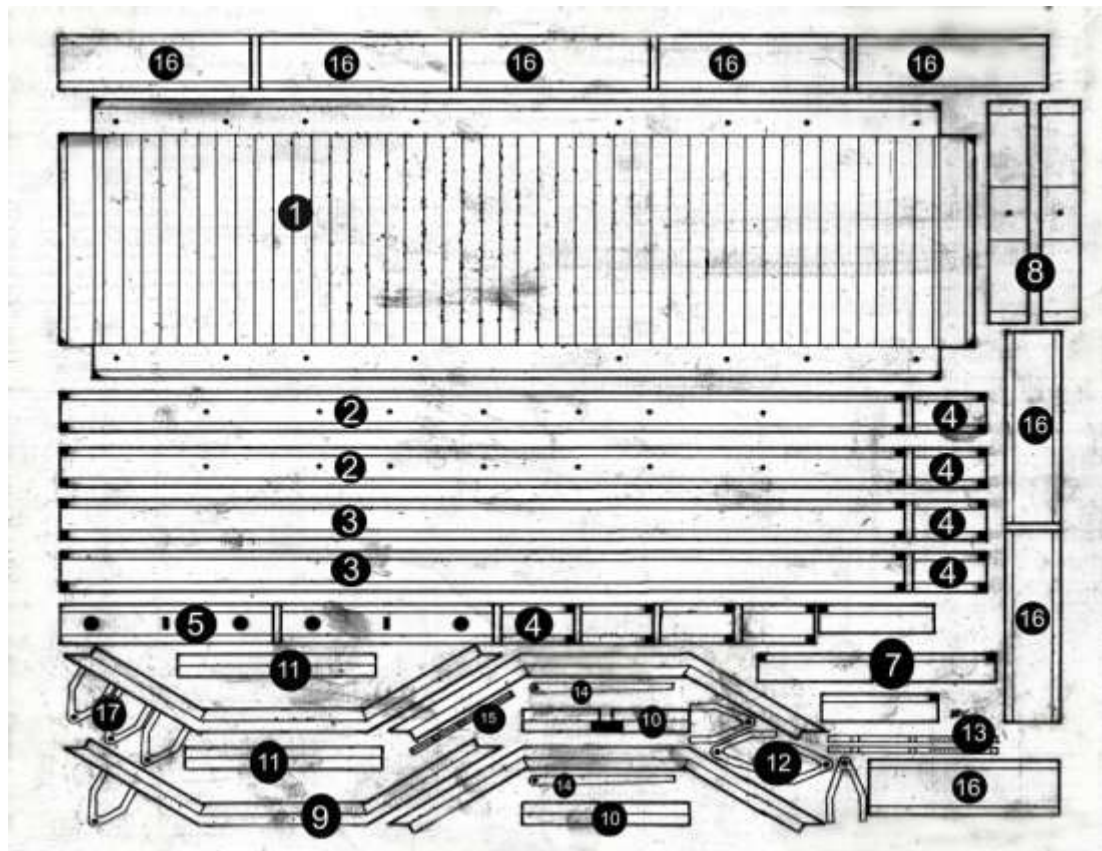
Drawing 1



Plan not to scale.

Castings and Etch





Etch list.

- | | |
|-------------------------------|--------------------------|
| 1 – Floor | 2 – Outer solebar |
| 3 – Inner solebar | 4 – Cross member (8 of) |
| 5 – Buffer beam (2of) | 6 – |
| 7 – End brace (4of handed) | 8 – Bogie pivot mount |
| 9 – Trusses (only use two of) | 10 – Truss post (4of) |
| 11 – Truss cross brace | 12 – Tall V hanger (4of) |
| 13 – Brake pin down bar (2of) | 14 – Brake handle |
| 15 – NOT USED | 16 – Bolster spacer |
| 17 – Short V hanger (4of) | |

Note: - Some parts of the kit will require some small amount of filling to achieve a snug fit of parts, i.e. the ends of solebars and cross members, and parts 10 truss posts will require a notch taken out in top corner see *Photo 1*

Instructions.

1. Take the floor (1), fold up top lip through 90° all round. Then fold up sides through 90° all round, this should form a tray then solder up corner seems. *Photo 2*
2. Take the outer solebars (2), inner solebars (3), inner cross members (4) and buffer beams (5), fold up to form a U shape. (note:- four of the cross members (4) can be bent to form Z shape, see later, photo15).
3. Solder outer solebars to buffer beams to form a rectangle, now take this and solder to underside of wagon floor. *Photo 3*

4. Fold up two trusses (9) and solder to inside face of solebars 55.5mm from outside of buffer beams, take the four truss posts (10) cut away the top corners on one side for sizes see *Photo 1*, next bend the four truss posts (10) to L shape and fit from sole bar to trusses. *Photo 4*
5. Now fit the cross members (4) up against the solebar and truss assembly, four on each side. *Photo 5*. (the outer one's should be folded to a Z shape so as to clear the wheels sets later on see photo 15).
6. Now fit the two inner solebars (3) between the buffer beams and up against the cross members.
7. Next take the end braces (7) fold to L shape and fit up against buffer beam and inner solebars. *Photo 6*. (note;- these will have to have some metal removed from the top edge to clear wheel sets, best done for position when the bogies are fitted see photo 15).
8. Take the two truss cross braces (11) fold to L shape and fit between Trusses. *Photo 7*
9. Take the bogie mount plate (8) open out hole to clear 6BA bolt (2,7mm), now solder a 6BA nut over hole on the side with the half etched lines. Bend to shape and fit over inner solebars and up against outer sole bars, spaced at 23" centres (161mm). *Photo 8*
10. Take tall V hangers (12) and solder these to inner face of outer solebars and to inner face of inner solebars. Now take the small V hangers (17) and solder these to the inner face of outer solebars and outer face of inner solebars. *Photo 9*
11. Take brake pin down bars (13), fold to shape and fit to solebars. *Photo 10*
12. Add buffer beam detail, Oleo buffers, coupling hook and back plate, and vac pipes.
13. Now fit the solebar and body side detail, wagon plate, load clip, shackles and bolster pockets. *Photo 11*
14. Next take the brake handles and bend to shape, these fit from the small V hanger to the brake pin down bar. *Photo 11*
15. Now fit the brake X-shafts and vac cylinder. Fit vac cylinder DW-29 to long X-shaft DW-82 then fit assembly between frames and tall V hangers, (you may have to reduce the length of the long X-shaft to fit). Now fit the short X-shaft DW-83 between the short V hangers, then fit the brake link DW-86 between the two X-shafts. *Photo 12*. To finish add some .7mm wire between the long X-shaft back to the bogie pivot. *Photo 12*.
16. **Now repeat with the other side.**
17. Bolsters, take etched parts 16 and bend to form shallow U shape. Take two of part 16 and solder back to back, *Photo 13*. these then fit to the under side of the cast bolsters DW-81(you may have to trim the top corners of part 16 to fit snugly into the cast bolster. *Photo 13*. Now fit the completed bolsters to the wagon floor, the pegs go into the cast side pockets in the desired positions.
18. Bogies, take the side frames drill out to take your chosen axle bushes. Take bogie bolsters and remove pip's from inside of ends. *Photo 14*. Assemble bogies make sure all is square fit bolster top between side frames and solder up. *Photo 14*.
19. The bogies are held on to the chassis with 2 x 6BA (or M3) bolts. You may find that you will have to just remove some metal on the members 7 to clear the wheel sets and turn the top lip of the cross members 4, also to clear wheel sets. *Photo 15*.

20. This completes the model, all to do now is clean the model, paint and apply transfers, see drawing for position.

We hope you have found this kit enjoyable and a satisfying model has been the result. If you have no further use for the box and card identification fillers please return it in good condition to us **at a show and we will refund you £1**

